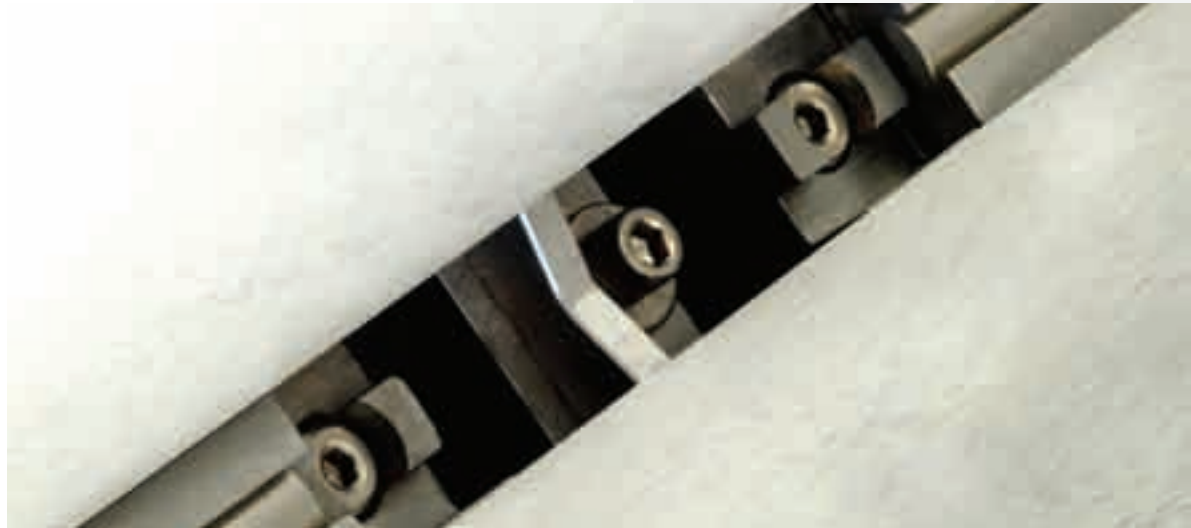


Wide Gap No-Tool Lock-up



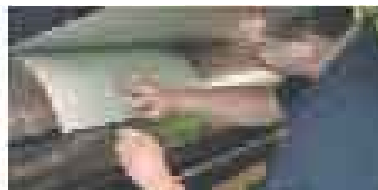
Maximizing press registration quality and reducing running waste

The Wide Gap No-Tool Lock-up is a new patent-pending, stainless steel, no-tool, plate-to-press registration lockup for Goss Metro presses.

The modular component design makes maintenance and changeability easy and does not affect registration of the press or require re-alignment after maintenance. Changing modules only takes minutes and does not affect press registration. This lock-up system will emphasize the quality of press and color registration while providing reliable plate holding strength and reducing start up and running waste during crucial deadlines.

The economical pricing of this new lock design and the significant reduction in installation time makes it affordable to upgrade worn and poorly performing locks while substantially reducing your Return on Investment. The Wide Gap No-Tool is the lock that provides quick web reductions.

While the Wide Gap No-Tool lock was designed for Goss Metro Presses, it is ideal to use with any press with a cylinder slot gap between 0.875 inches and 1 inch (22.23 – 25.4mm). Our experienced lock designers are willing to offer their expert consultations to customize locks to meet other needs outside normal press specifications.



Technical specifications

Wide Gap No-Tool

The Glunz & Jensen Wide Gap / No-Tool is a no-tool, double acting lock-up for presses with cylinder gaps between 24.5 - 22.22 mm (1.0 - 0.875") wide.

The Wide Gap components are made of Stainless Steel and incorporate new technologies that:

- Provides faster initial installation than any other lock on the market,
- Robust lock design has fewer number of parts than comparable no-tool locks,
- Allows forgiving plate bend profiles and unique cylinder designs,
- Heavy-duty components ensure trouble-free operation for many years.

Benefits and features:

- The Glunz & Jensen Wide Gap / No-Tool Press Registration Lock-Up does not require a tool for plate installation.
- Multiple clamps offer multiple web capacity.
- The Glunz & Jensen Wide Gap / No-Tool Press Registration Lock-Up is a double acting lock allowing the plate cylinder to reverse.
- Air hose and periodic light lubrication is the only maintenance required.
- Separate lead and trail locking mechanisms ensure positive hold on the plate to reduce pullout.
- The lock is web adjustable without drilling and tapping, resulting in faster and easier web reductions.

Web width:

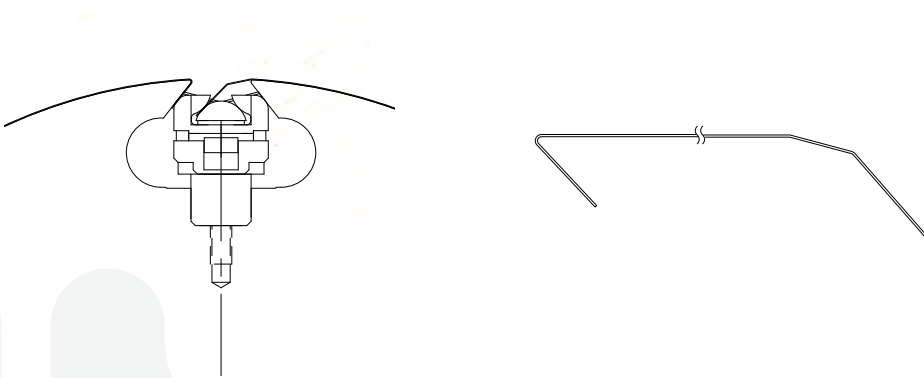
Available down to 44 inch webs.

Typical press application:

Goss Metro and Wood Hoe presses.

Plate up procedure:

The plate is installed on the lead of the plate cylinder between the lead clamps and lead edge of the cylinder. Coil springs apply force on the lead clamps that holds the lead of the plate against the lead edge of the cylinder. The trail of the plate is installed between the trail clamp and trail clamp housing with coil springs applying force to hold the trail in place. The centrifugal force on the lead and trail clamps increases the holding forces on the plate as the press speed increases, resulting in a positive force to retain the plate on the cylinder.



GLUNZ & JENSEN 
PRESS REGISTRATION SYSTEMS

Headquarters:

Glunz & Jensen A/S
Haslevej 13
DK-4100 Ringsted
Denmark
Tel. +45 57 68 81 81
Fax +45 57 68 83 40
gjhq@glunz-jensen.com
www.glunz-jensen.com

Glunz & Jensen, Inc.
21405 Business Court
Elkwood, VA 22718-1757
USA
Tel. +1 540 825-7300
Fax +1 540 825-7525
usva@glunz-jensen.com

Glunz & Jensen, Inc.
12633 Industrial Drive
Granger, IN 46530
USA
Tel.: +1 574 272 9950
Fax: +1 574 277 6566
lockups@glunz-jensen.com