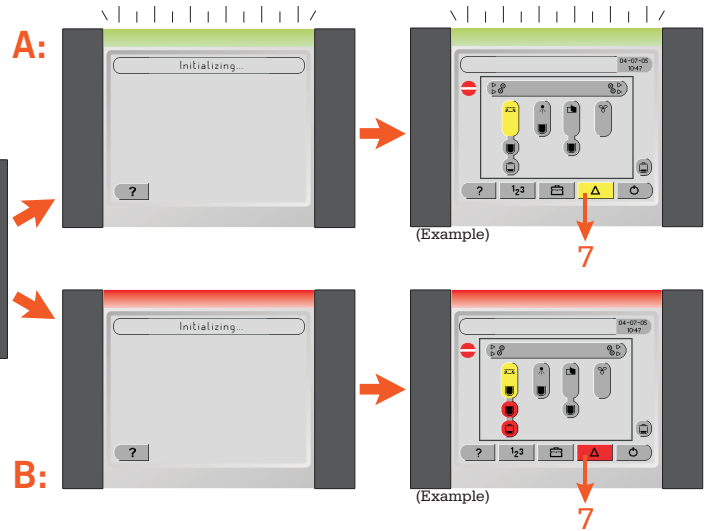
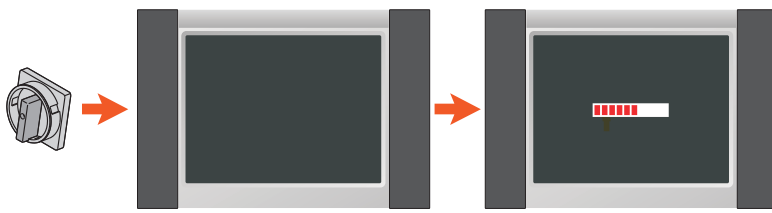
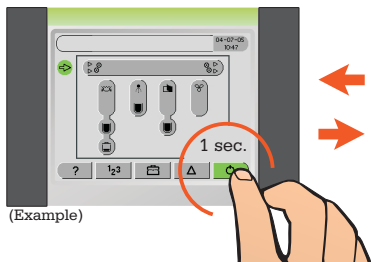


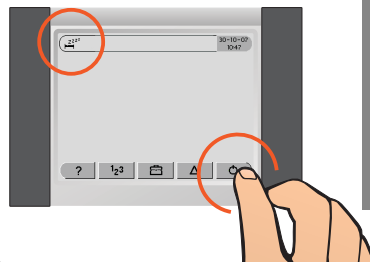
Power on



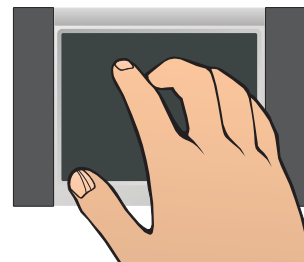
Ready



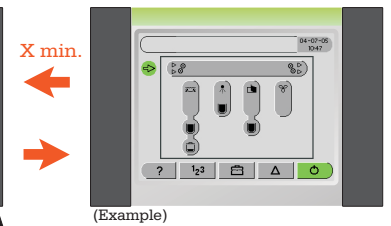
Sleep (power save)



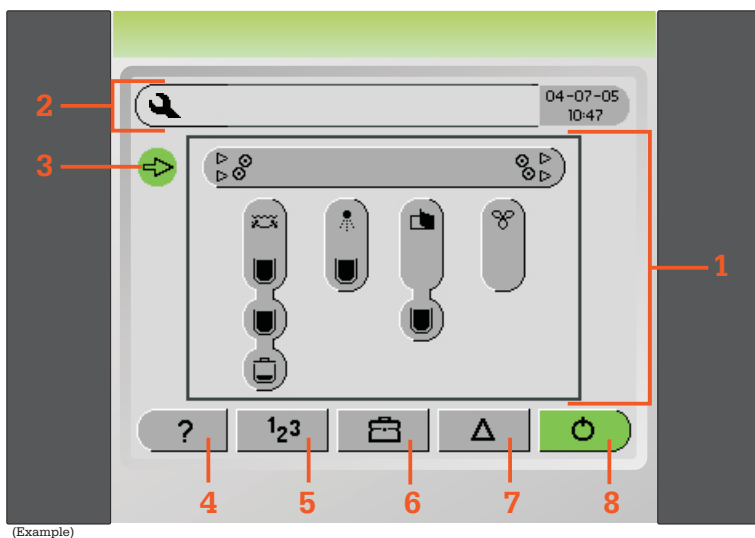
Screen save



Ready/Sleep



Overview



1 Processor overview :

- Buttons represent all sections in the processor. Each has a reference icon, e.g. ⚙️ for wash section.
- Sections display fluid level in tank and containers.
- Sections data and functions can be accessed by pressing the buttons.

2 Status icon indicating the processors state (see page 2).

3 Plate feed indicator (ready).

4 Help button.

5 Button for accessing processor data grouped in :

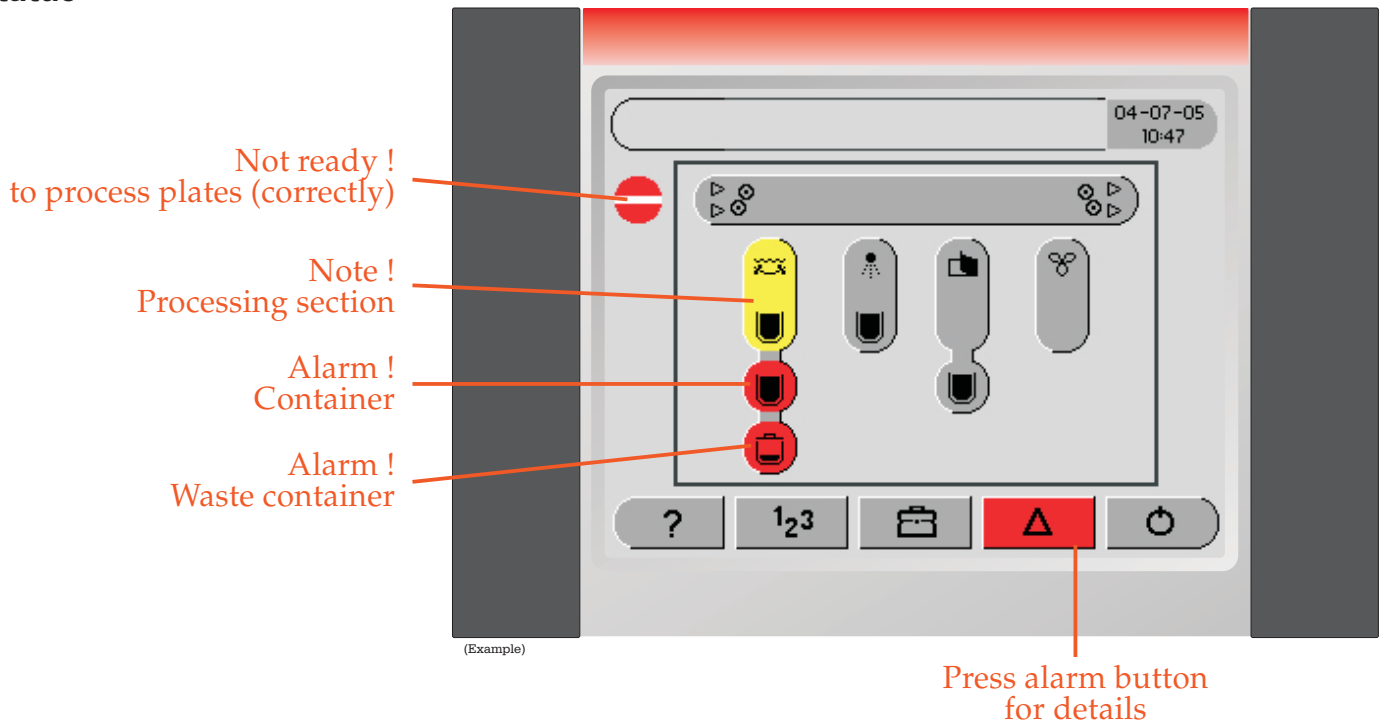
- Statistics - cover counters and events.
- Settings - for individual usage and preferences.
- Configuration - specifying what is physically installed.

6 Button for accessing processor tools.

7 Alarm list button (see page 2).

8 Button for switching between ready mode and sleep mode (power save). See above.

Status



Some types of alarms will be cleared by solving the problem e.g. replacing a container. Others require user confirmation accessed through the alarm list.

Status colors

Ready

The processor is ready for processing. No notes or alarms on any section.



Note !

The processor will automatically attempt to reestablish section to correct condition.



Ready

The section is ready.



Alarm !

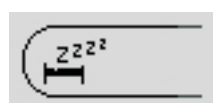
Action from user or service personnel required.



Status icons

Sleep mode !

Press the  button to switch to ready mode.




Cover is open !

The processor cannot be operated while cover is open.



Service mode !

Pressing  will restart the processor to return to ready mode.

