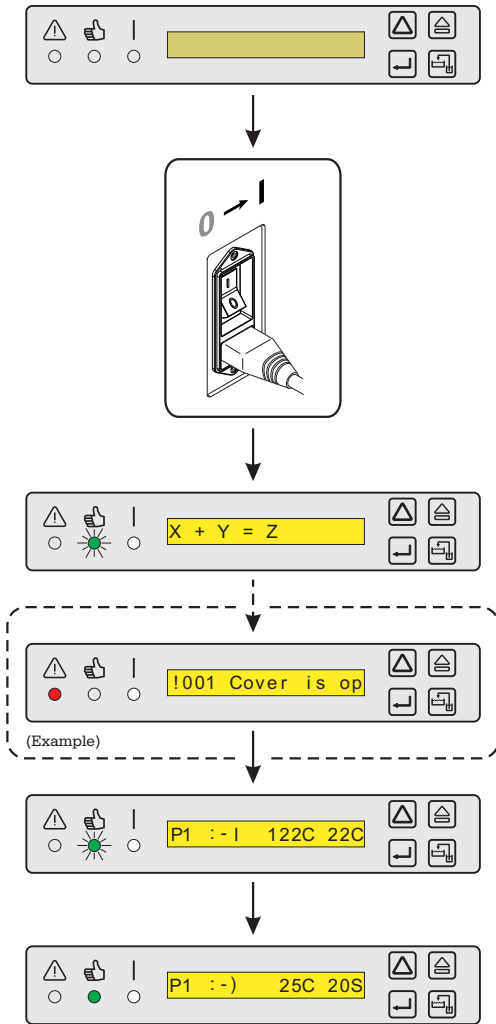
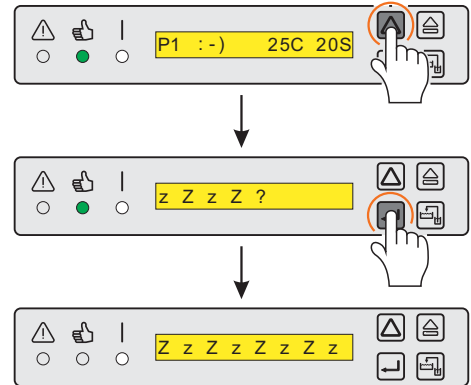


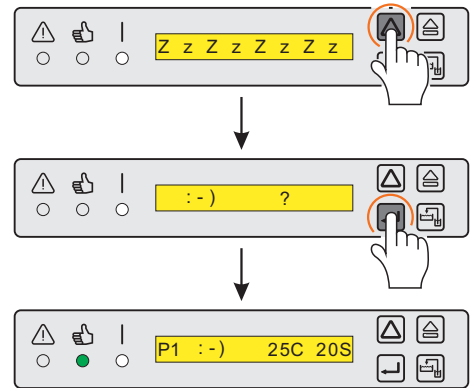
## Power on



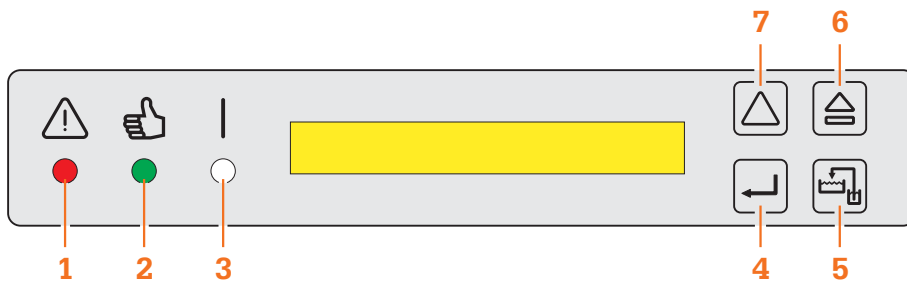
## Ready → Sleep (power save)



## Sleep (power save) → Ready



## Overview



**1 Alarm indicator**  
Action from user or service personnel required.

**2 Ready indicator**  
The processor is ready for processing. No notes or alarms on any section.

**3 Power indicator**  
The processor is powered on.

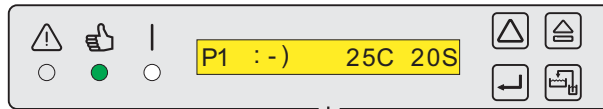
**7 Scroll up button**  
Scrolls up in the menu.

**6 Eject plate button**  
Starts the transport system to eject a plate jammed inside the processor.

**5 Manual replenisher button**  
Gives a fixed amount of replenisher to the gum section.

**4 Accept button**  
Accepts the chosen function.

## Menu



- P1 ?**  
Program 1
- P2 ?**  
Program 2
- P3 ?**  
Program 3
- P4 ?**  
Program 4
- ~ Cleaning cycle**  
Finisher clean
- z Z z Z ?**  
Sleep mode
- \* Service/Info >**  
Service information

- Service mode ?**  
Service mode
- # 10059700-XXXX**  
Serial number
- \$ xxx-YYYYMMDD >**  
Software version
- @XXX.XXX.XXX.XXX**  
IP address
- P Configuration >**  
Configuration
- S Store logs**  
Store log files

- + Restore data**  
Restore parameters
- ↓ Backup data**  
Backup parameters

## Change of settings via Remote Enabling System

