

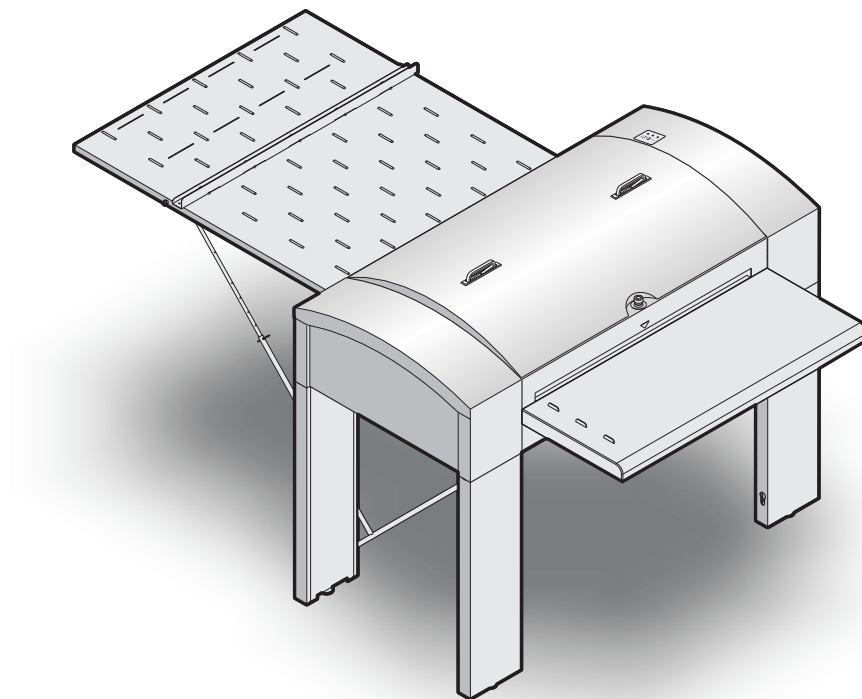
User's Manual



C85/C120
Cleaning Unit

User's Manual

C85/C120 Cleaning Unit



Edition AA, March 2007
This book has part No 51547-GB



This manual is for daily users of the equipment.

Always read the *Safety Instruction Manual part No 21741* before starting up the equipment.

Keep the manuals with the equipment for reference at all times.

This manual is published by: **GLUNZ & JENSEN A/S**
Haslevvej 13,
DK-4100 Ringsted
Denmark
Phone: +45 57 68 81 81
E-mail: gjhq@glunz-jensen.com
Internet: www.glunz-jensen.com

Table of Contents

Part 1: Introduction	1-1
Important!	1-1
Approvals:	1-1
Intended use of the equipment:	1-1
Installation:	1-1
Technical data:	1-1
This Manual.	1-1
Intended use of this manual:	1-1
Reservations:	1-2
Warnings, Cautions and Notes!	1-2
Explanation:	1-2
 Part 2: Functional Description	 2-1
General	2-1
Cleaning and Gumming (1)	2-1
Dryer (2)	2-1
Controls and Indicators	2-3
Main Switch (1)	2-3
"Alarm" Indicator (2) (Red)	2-3
"Ready" Indicator (3) (Green)	2-3
"On" Indicator (4) (Yellow)	2-3
"Eject" Key (5)	2-3
"Rinse" Key (6)	2-3
Emergency Stop-Button (7)	2-3
 Part 3: Operating Procedures	 3-1
Starting Up	3-1
Securing the Transport Rollers	3-1
Switching the Cleaning Unit ON	3-3
Jog Function	3-3
Feeding from the Feed Table	3-5
Off-line cleaning units only!	3-5
Feeding from a Platesetter	3-5
On-line cleaning units only!	3-5
Shutdown Procedure.	3-7
Turning Cleaning Unit OFF	3-7
Releasing Transport Rollers	3-7

Part 4: Cleaning and Maintenance	4-1
General	4-1
Cleaning Accessories	4-1
Cleaning Agent.	4-1
Cleaning/Maintenance Intervals	4-2
General	4-2
Every 300 m ² or 4 Weeks	4-2
Every 900 m ² or 12 Weeks	4-2
Cleaning the Cleaning Unit Exterior.	4-2
Using the Rinse Function	4-3
Major Cleaning, Cleaning and Gumming Section	4-5
Normal Cleaning, Dryer Section	4-6

Part 1: Introduction

Important!

Approvals:

- The cleaning unit is manufactured according to legal demands. For compliance with the requirements the equipment is tested by Underwriters Laboratories or other accredited authority.
- Approvals will appear from the labels attached to the cleaning unit name plate or the frame part of the cleaning unit.

Intended use of the equipment:

- Development of photographic materials as specified in "1. TECHNICAL SPECIFICATIONS" in the Service Manual.

Installation:

- The installation procedure is described in the separate "Installation Manual".
- It is the responsibility of the owner and operator/s of this cleaning unit, that the installation is made in accordance with local regulations, and by engineers authorized to carry out electrical installations.
- Installation, service and repair must be performed only by service technicians who are trained in servicing the equipment.
- The manufacturer cannot be held responsible for any damage caused by incorrect installation of this cleaning unit.

Technical data:

- Observe technical data from the cleaning unit name plate located on the rear panel of the cleaning unit.

This Manual

Intended use of this manual:

- This manual is for the daily user of the equipment.
- Always read the *Safety Instruction Manual, part No 21741* before starting up the equipment and keep it with the machine for reference at all times.

Reservations:

- This manual was written and illustrated using the best possible information available at the time of publication.
- Any differences between this manual and the equipment reflect improvements introduced after the publication of the manual.
- Changes, technical inaccuracies and typographic errors will be corrected in subsequent editions.
- As a part of our policy of continuous improvement, we reserve the right to alter design and specifications without further notice.

Warnings, Cautions and Notes!

Throughout the manual warnings, cautions, and notes are written in bold on a grey background like the example below:



NOTE! Do not use any abrasive materials when cleaning the cleaning unit panels.

Explanation:

NOTE!The operator should observe and/or act according to the information in order to obtain the best possible function of the equipment.



CAUTION!The operator must observe and/or act according to the information in order to avoid any mechanical or electrical damage to the equipment.



WARNING!The operator must observe and/or act according to the information in order to avoid any personnel injury.

Part 2: Functional Description

General

(See illustration below)

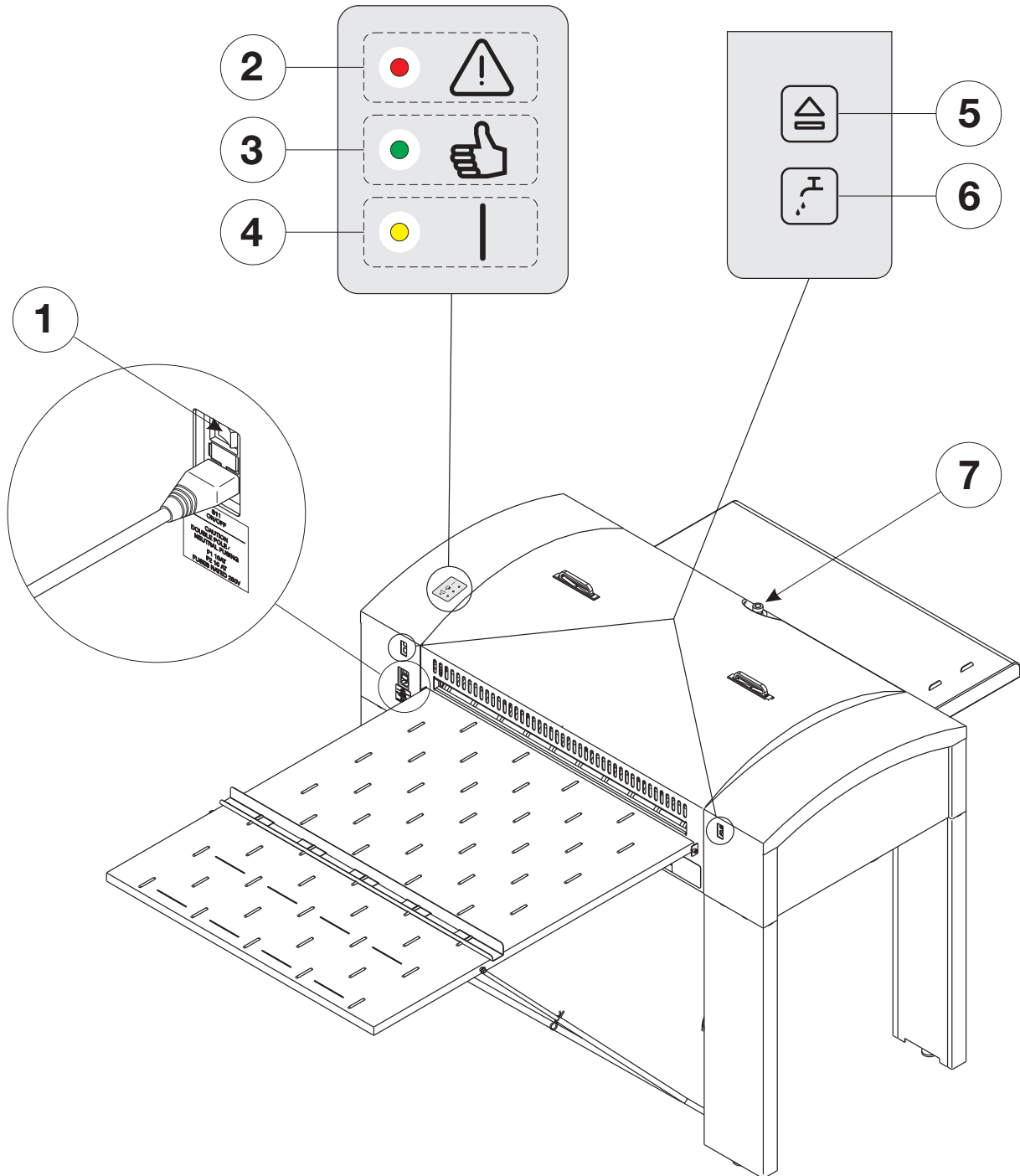
The unit holds two major sections:

Cleaning and Gumming (1)

Removing of unexposed emulsion followed by application of a thin layer of gum to protect the plate from oxidation, dirt, fingerprints etc.

Dryer (2)

Drying of the plate to ensure immediate handling of the plate.



Controls and Indicators

(See illustration opposite)

Main Switch (1)

Turns cleaning unit power ON/OFF.

"Alarm" Indicator (2) (Red)

Lights up if cleaning unit requires attention.

See "4. TROUBLE SHOOTING" in the Service Manual for details.

"Ready" Indicator (3) (Green)

Lights up when cleaning unit is ready.

"On" Indicator (4) (Yellow)

Lights up when cleaning unit is switched ON by the main switch (1).

"Eject" Key (5)

Press key to start the cleaning unit in "CLEAN" mode (transport motor, scrub roller motor, circulation pump, dryer heater and blower run).

Press key again to return to "STANDBY" mode.



NOTE! This function can also be used for ejecting a plate stuck inside the cleaning unit.

"Rinse" Key (6)

Press to start the cleaning unit cleaning procedure.

See "CLEANING AND MAINTENANCE" later in this manual for details.

Emergency Stop-Button (7)

When pushed the button immediately cuts off all power supply to various components.

Part 3: Operating Procedures

Starting Up

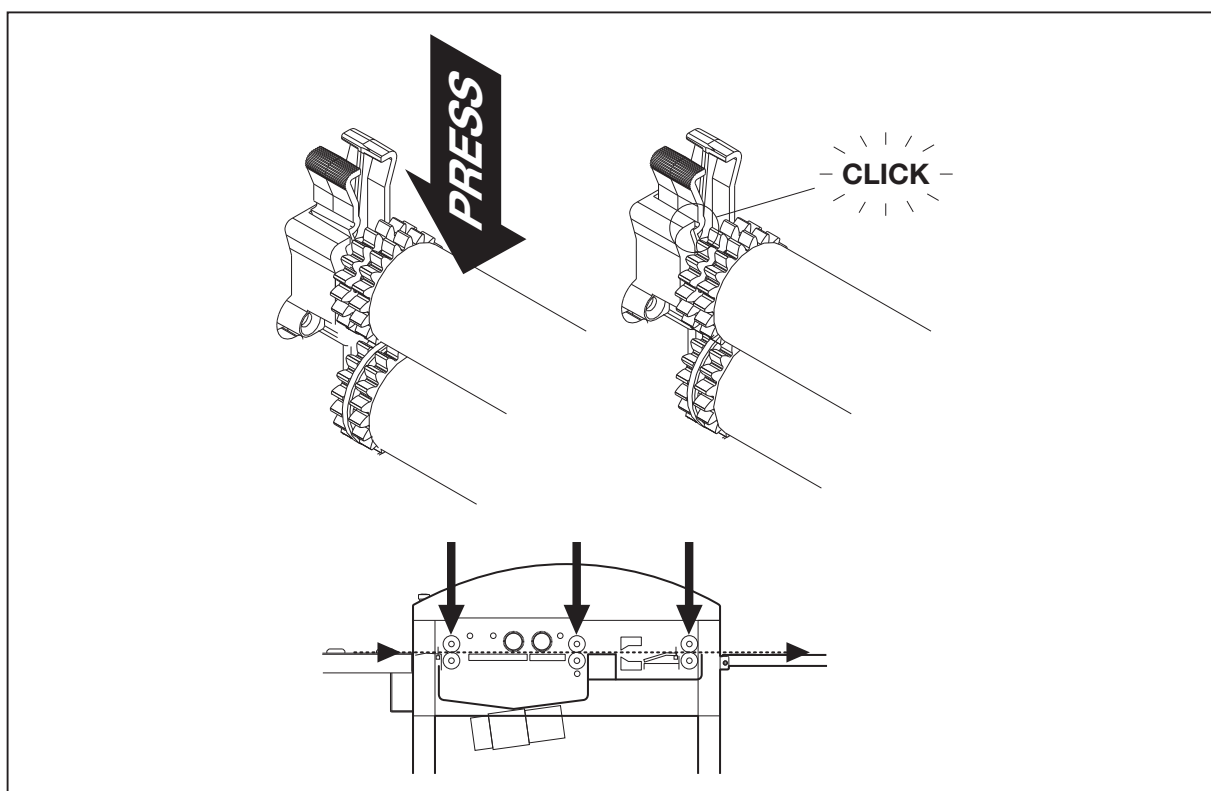
Securing the Transport Rollers

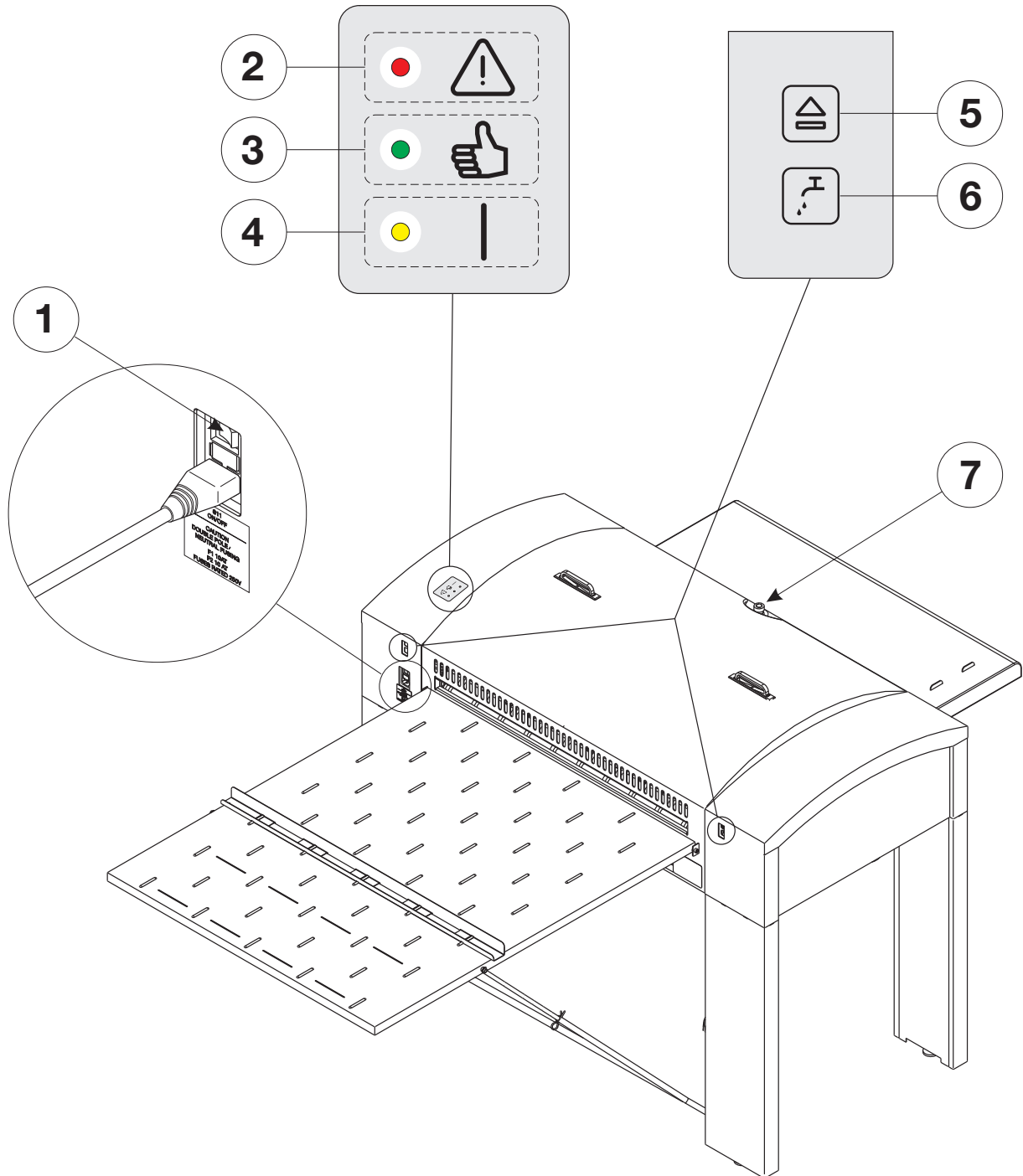
Before starting up you have to remove the top cover and the inner covers to check if the transport rollers have been released from their locked positions.

If this is the case you must secure them again:

(See illustration below).

- Press down in each side of the three transport roller pairs as indicated (**NB! Drive side first**) to lock them.
- When the roller bearings "click" they are properly secured.





Switching the Cleaning Unit ON

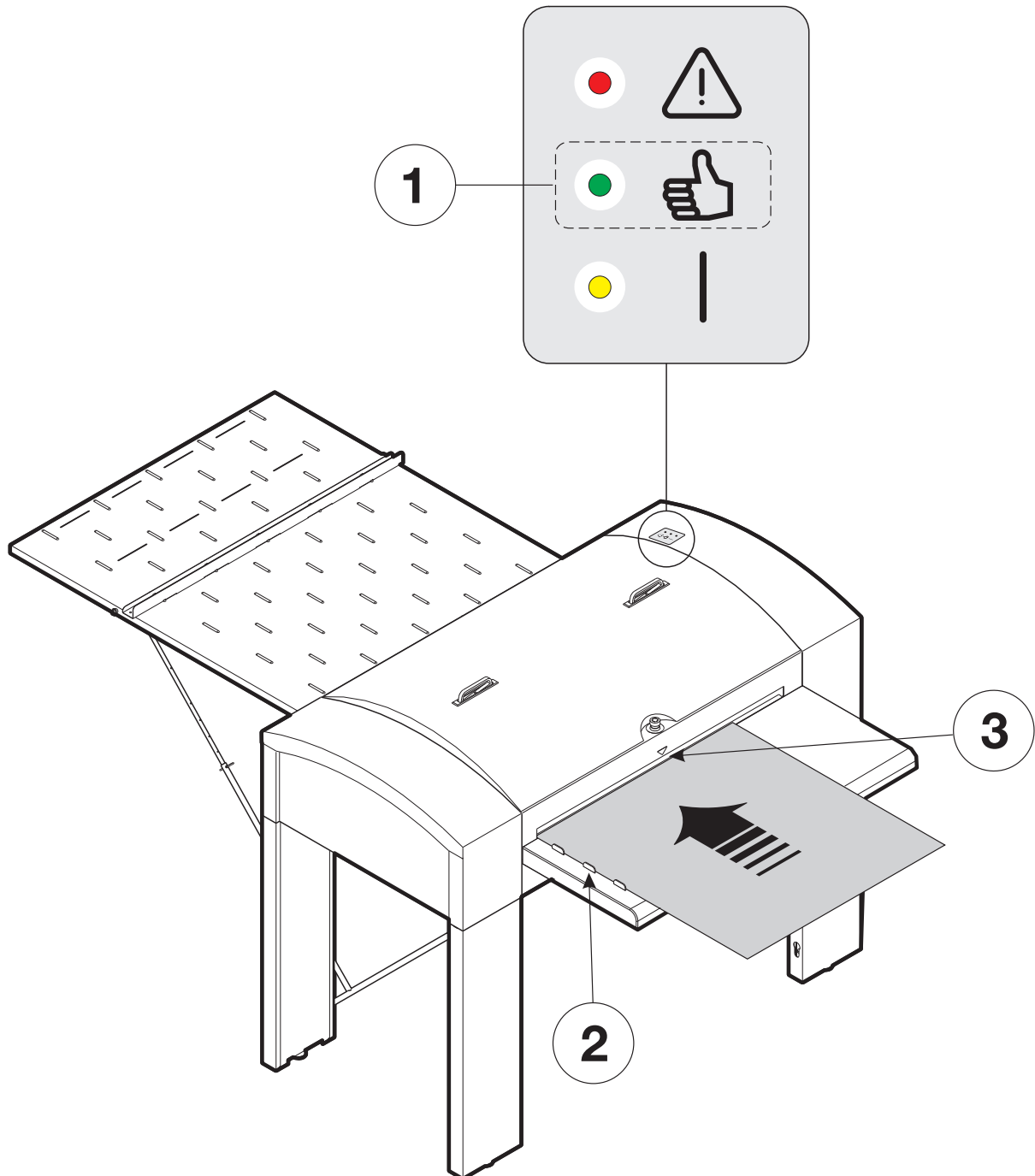
(See illustration opposite).

- Make sure that the gum container **(8)** is sufficiently filled.
- Turn main switch **(1)** to ON/I.
- The "Power" indicator **(4)** is lit, the cleaning unit initializes for about 3 seconds and then turns into "STANDBY" mode.
- When "READY" indicator **(3)** lights up cleaning can start.

Jog Function

The JOG function will start the circulation pump and make the transport rollers and brushes turn for a while at intervals to prevent crystallization of cleaning/gumming solution on the rollers and brushes.

The initial JOG (after power has been applied to the cleaning unit) runs for 2 minutes. After that the JOG will run for 30 secs. every 10 minutes.



Feeding from the Feed Table

Off-line cleaning units only!

(See diagram opposite)



CAUTION! Always ensure that plates are removed promptly from the exit table to avoid that plates scratch each other.

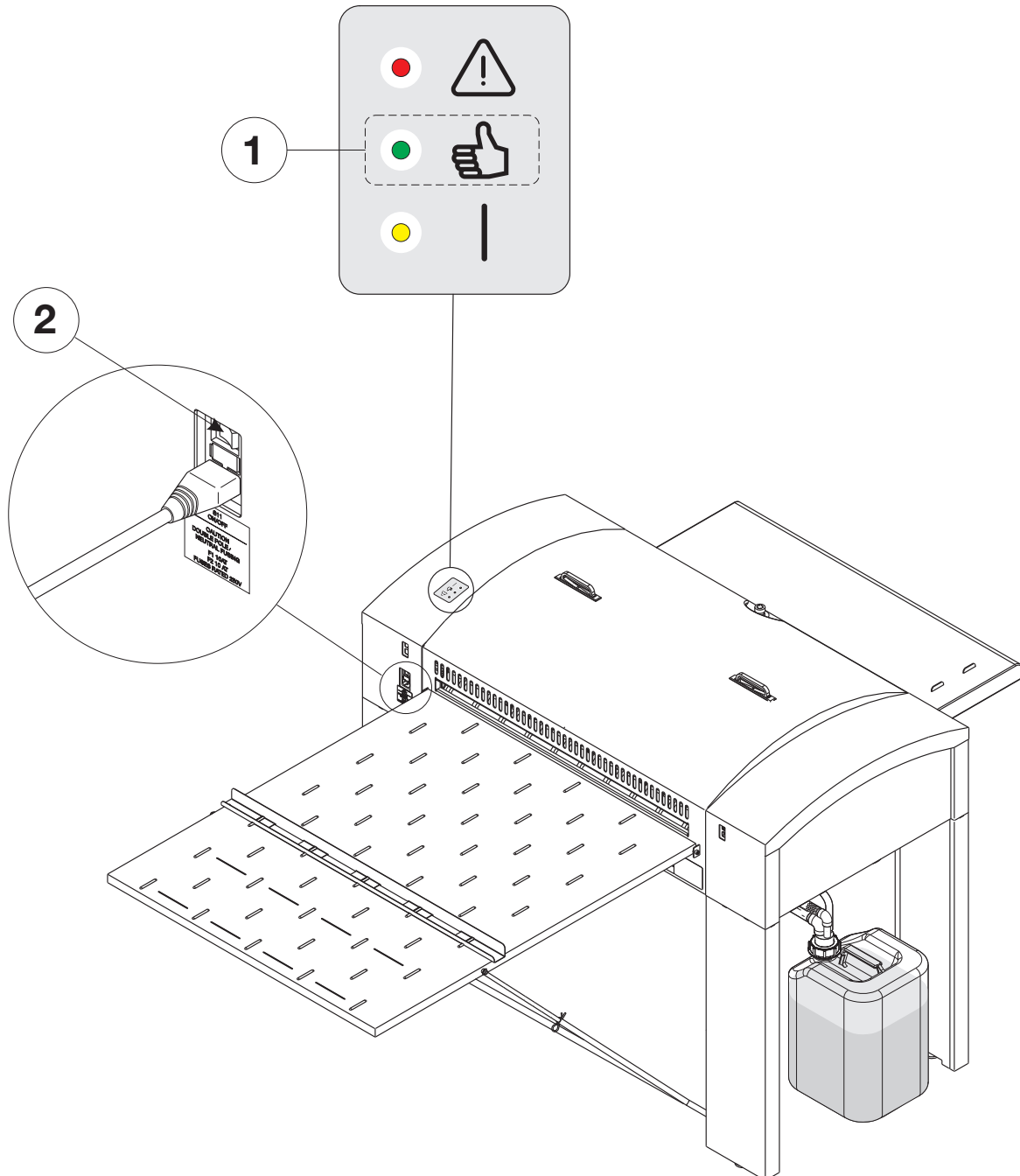
- The cleaning unit must be in "STAND-BY" mode and "READY" indicator (1) should be lit.
- Always feed plate material from the left side of the feed table with the emulsion side upwards using the plate feed guides (2) on the table.
- Feed the plate slowly into the cleaning unit until it engages the entrance rollers. The input sensor (3) switches the cleaning unit into "CLEAN" mode and the machine starts up with the preset speed settings.
- Verify that the "READY" indicator (1) turns off, indicating that a plate is being fed into the machine.
- The "READY" indicator (1) is lit again shortly after the plate has left the input sensor (3). A new plate can then be inserted.
- The cleaning unit automatically returns to "STAND-BY" mode shortly after the plate exits.

Feeding from a Platesetter

On-line cleaning units only!

(See illustration opposite).

- The cleaning unit must be in "STAND-BY" mode and "READY" indicator (1) should be lit.
- The cleaning unit will automatically start up in "CLEAN" mode when a plate enters the cleaning unit from the platesetter.
- The cleaning unit automatically returns to "STAND-BY" mode shortly after the plate exits.



Shutdown Procedure

i NOTE! The cleaning unit should only be shut down completely for holidays or for maintenance and servicing purposes.

Turning Cleaning Unit OFF

(See illustration opposite)

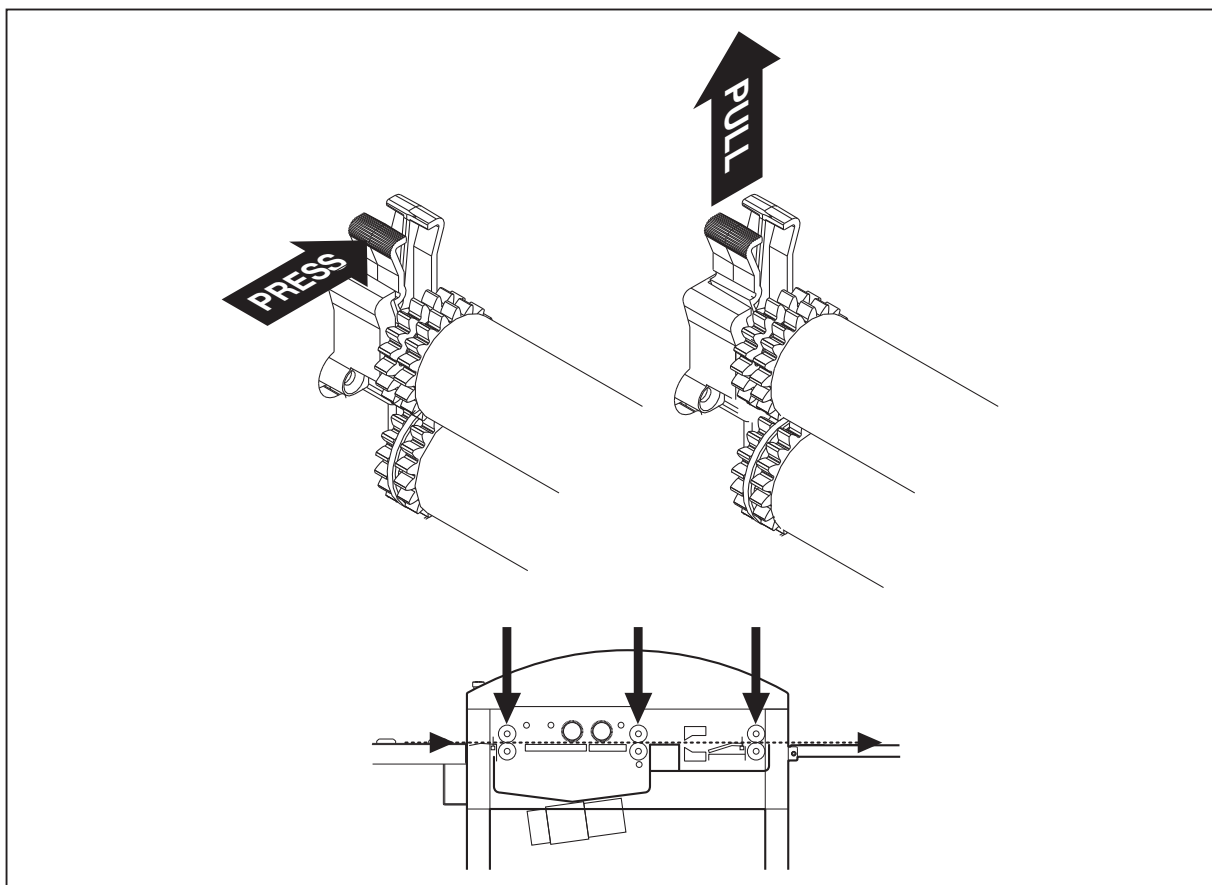
- The cleaning unit must be in "STAND-BY" mode and "READY" indicator (1) should be lit .
- Shut down the cleaning unit by switching the main switch (2) to "O" (off).

Releasing Transport Rollers

(See illustration below)

If the cleaning unit has to be shut down for a longer period the transport rollers should be released:

- Remove top cover and inside covers.
- Release the roller bearings in both sides by pressing the locking arm as illustrated and then pulling them upwards.
- Replace covers.





Part 4: Cleaning and Maintenance

General

Performing cleaning and maintenance regularly reduces the chances of equipment failure and the loss of cleaning quality.

Only one person should be responsible for performing the preventive maintenance program. That person should be familiar with the equipment as well as its operational characteristics and maintenance requirements.

 **NOTE!** Personnel performing any maintenance, cleaning or servicing must familiarize themselves with the safety instructions and environmental protection described in the "Safety Instruction Manual" before attempting any of these procedures.

 **CAUTION!** Do not cover the machine with a cloth or piece of plastic to protect it from dust, as this prevents free circulation around the machine and can lead to condensation and overheating.

 **CAUTION!** Be sure to disconnect electrical power and unplug the unit before performing any cleaning or maintenance.

Cleaning Accessories

 **CAUTION!** Never use hard tools or abrasive materials when cleaning any part of the cleaning unit.

An apron, rubber gloves and eye goggles.

For personal protection.

Lint-free cloth, sponge and soft brush.

For cleaning of rollers, guides and tank walls.

Longhandled bottle brush and thin wire(ex. paper clip).

For cleaning the inside and the holes of the spray tubes.

Cleaning Agent

Warm water 35-40°C (95-104°F). For all cleaning purposes.

 **WARNING!** Never use cleaning agents containing chlorinated solvents or acetic or phosphoric acid. These constitute a health hazard and could damage the cleaning unit.

Cleaning/Maintenance Intervals

General

- i** **NOTE!** Cleaning intervals must always correspond to the duty level of the cleaning unit.
The cleaning intervals indicated below are standard recommendations.

The cleaning and maintenance procedures are described on the following pages.

Every 300 m² or 4 Weeks

- Cleaning the cleaning unit exterior.
- Normal cleaning of Cleaning and Gumming section using the "RINSE" function,

Every 900 m² or 12 Weeks

-or every 3 times performing normal cleaning of Cleaning and Gumming section whatever comes first.

- Major cleaning of Cleaning and Gumming section.
- Normal cleaning, dryer section.

Cleaning the Cleaning Unit Exterior

- i** **NOTE!** Do not use any abrasive materials when cleaning the cleaning unit panels.

- Use a lint free cloth and warm water to carefully wipe clean all surfaces, especially the exit table and the feed table (if any).

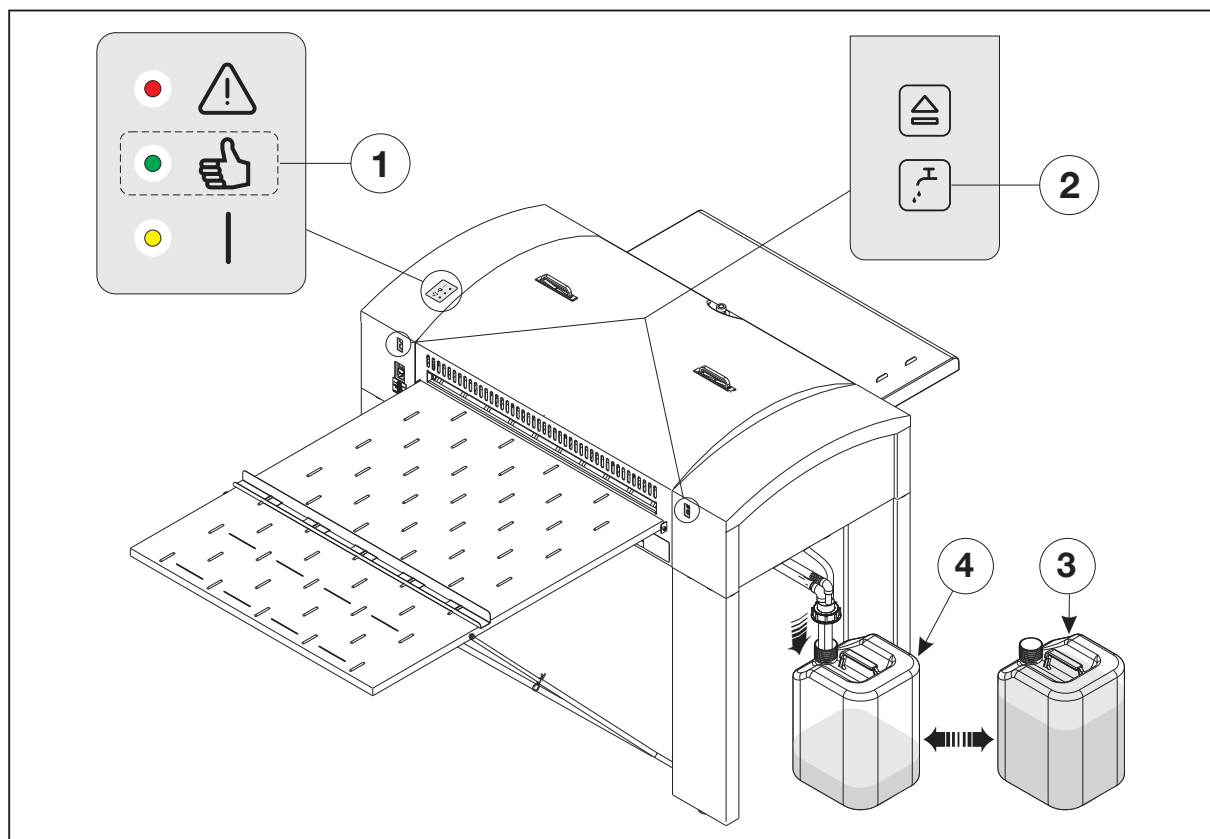
Using the Rinse Function

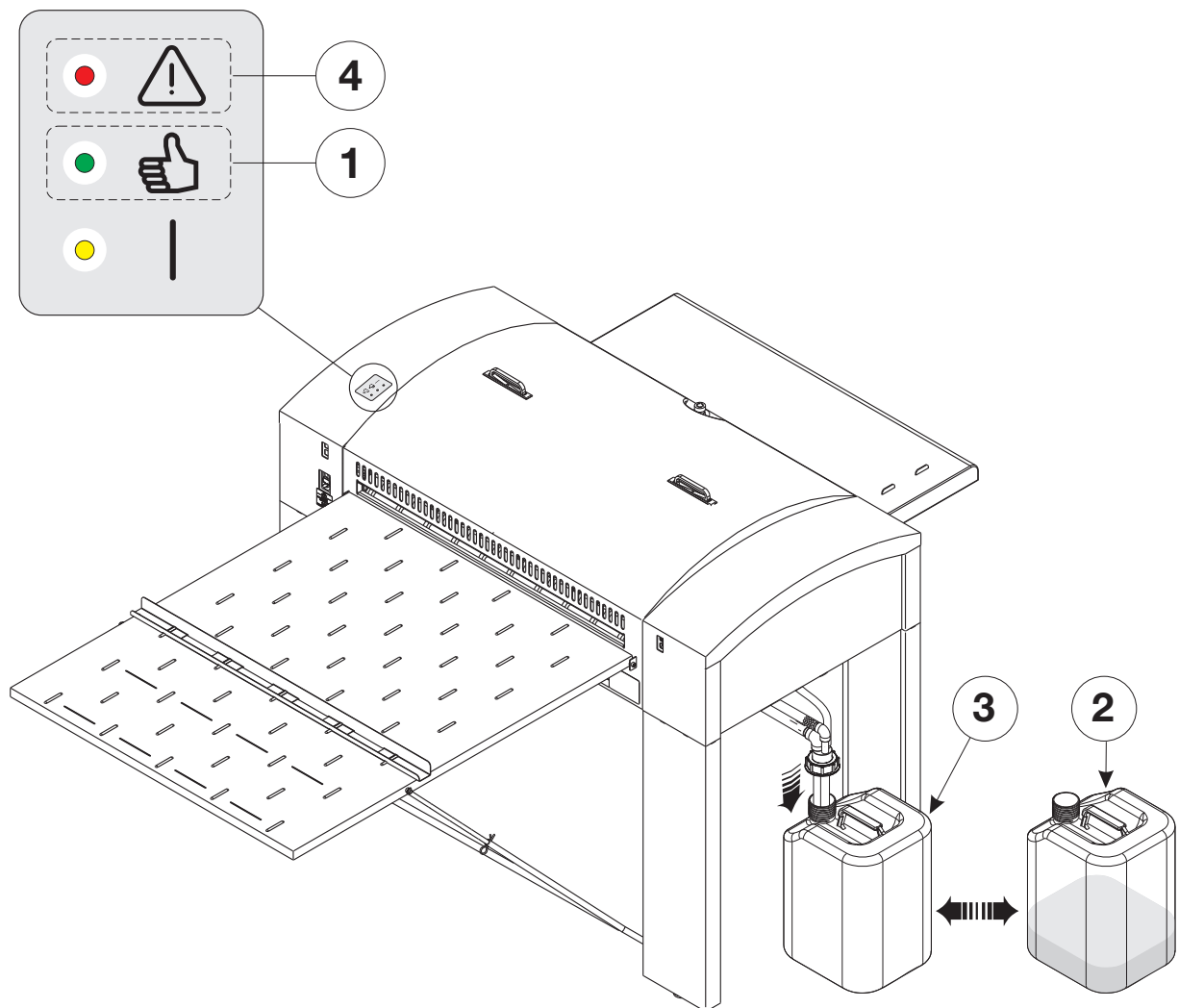
(See illustration below).

- The cleaning unit must be in "STAND-BY" mode and "READY" indicator (1) should be lit.
- Press "RINSE" key (2) once to disable the JOG function. The "READY" indicator (1) will flash slowly.
- Remove the Gum container (3) and replace it with a container (4) holding app. 5 litres of water.
- Press "RINSE" key (2) twice within 5 seconds to start the cleaning procedure. "READY" indicator (1) turns off.

i NOTE! It is possible to abort the cleaning procedure anytime by pressing the "RINSE" key (2).

- The program will run for 5 minutes and when "READY" indicator (1) flashes, remove the water container and replace it with a container with fresh Gum.
- Finally press "RINSE" key (2) to end the cleaning procedure.
- When "READY" indicator (1) stops to flash cleaning can start again.
- Empty the dirty water container (4) into the container with used Gum (3) and dispose of this container properly.

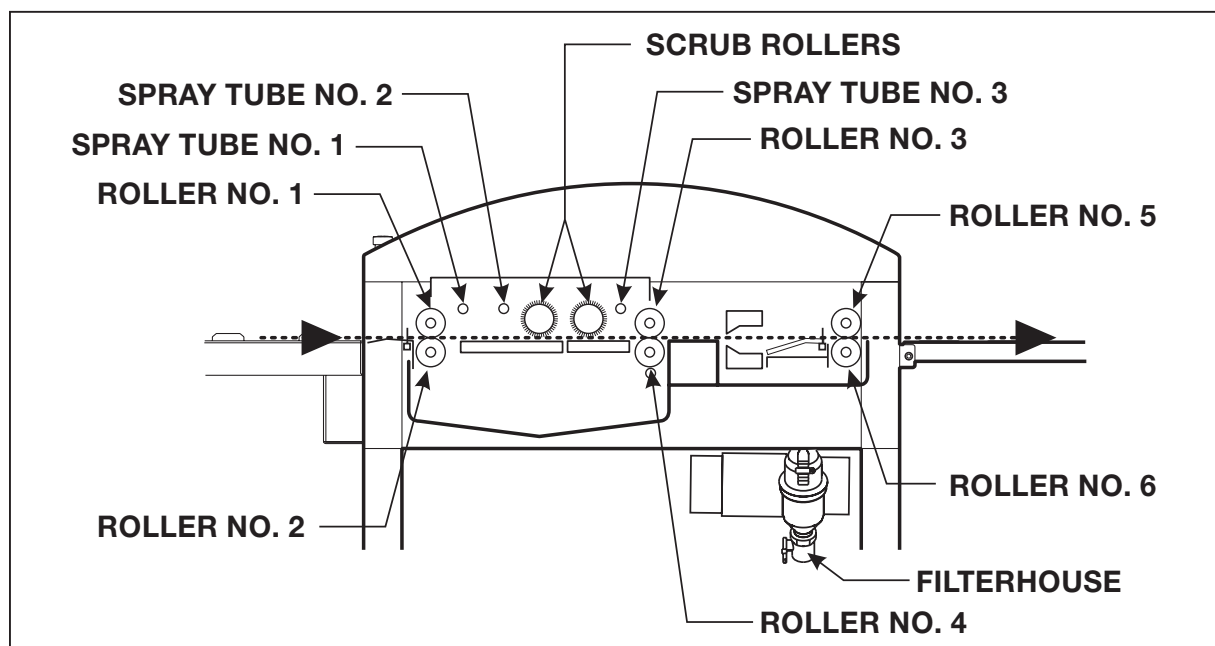




Major Cleaning, Cleaning and Gumming Section

(See illustration opposite).

- Run the "RINSE" function as described in "USING THE RINSE FUNCTION" earlier.
- When "READY" indicator (1) flashes remove the water container (2) and replace it with an empty bucket or container (3).
- Remove top cover and inside covers.
- The "READY" indicator (1) turns off and the "ALARM" indicator (4) is lit.
- Remove the three spraytubes, the two scrub rollers and six transport rollers from the cleaning and gumming section and clean them separately:
 - Clean rubber rollers with a cloth or brush and water.
 - While running water over the brush, draw it through your hand (use rubber gloves).
 - Clean the spraytubes outside with a cloth or toothbrush and water and the inside using a longhanded bottle brush. If necessary clean the holes in the spray tubes with a piece of thin wire (ex. a paper clip).
 - Take the strainer out of the filterhouse, manually clean it with water and a brush and put it back in the filterhouse. Make sure that the orange valve is closed properly. (See illustration below).
- Wash the guides, gears, tank bottom and walls with water using a cloth or soft brush.
- Make sure that all parts are reinstalled in their proper place after cleaning. See illustration below for proper location of rollers, scrub rollers and spray tubes.
- Remove bucket or water container (3) and replace it with a container with fresh gum container.
- When "READY" indicator (1) is lit cleaning can start again.



Normal Cleaning, Dryer Section



CAUTION! Do not use running water to clean the dryer section.

(See illustration below)

- Remove the transport rollers (1) from the section and clean them with a moist cloth.
- Wipe guides (2) with a moist cloth.
- Reinstall rollers again.

