

FLEEXO

# Flex-Line

AUTOMATED.  
RELIABLE.  
TRUSTED.



GLUNZ & JENSEN  | developing more

# AUTOMATED. RELIABLE. TRUSTED.

Glunz & Jensen Flex-Line™ is a fully automated flexo platemaking system. Flex-Line integrates the flexo plate washout processor with automated movement of the plate into dryers, light finishers and stacker holding slots.

With Glunz & Jensen Flex-Line you can re-think your prepress workflow. Based on our experience with inline systems, we have developed a completely new approach to automated platemaking.

An investment in Flex-Line is an investment in full platemaking automation and provides immediate savings in your plate production department. Minimised manual plate handling, inline integration of the platemaking process, and production data integration become reality.

The Flex-Line features a unique elevator system, which moves the plates freely between all process steps. It can be configured with a Flex-Pro 520 processor or with the 520XP premium processor for double the productivity.\*

All models offer:

- Flexible configuration concept
- Small footprint containing all processing steps
- Efficient, individually controlled drying slots with outstanding temperature uniformity
- Largest stacking capacity in the market
- Programmable plate resting period between drying and light finishing
- Option to inspect plates prior to light finishing
- Ease of lamp replacement in light finisher
- Simplified mechanics with less wear points

## Flex-Line 520 Compact

Standard productivity, compact footprint in-line for solvent incremental processing.

- 1 Flex-Pro 520 Processor
- 6 Dryer slots
- 1 Light Finisher
- 5 Stacker slots



## Flex-Line 520 Standard

Standard productivity in-line for solvent incremental processing.

- 1 Flex-Pro 520 Processor
- 9 Dryer slots
- 1 Light Finisher
- 16 Stacker slots



## Flex-Line 520XP Standard

Higher productivity in-line for solvent batch or incremental processing.

- 1 Flex-Pro 520XP Processor
- 9 Dryer slots
- 1 Light Finisher
- 16 Stacker slots



## Flex-Line 520XP Max

Highest productivity in-line for solvent batch or incremental processing.

- 1 Flex-Pro 520XP Processor
- 9 Dryer slots
- 2 Light Finisher
- 15 Stacker slots



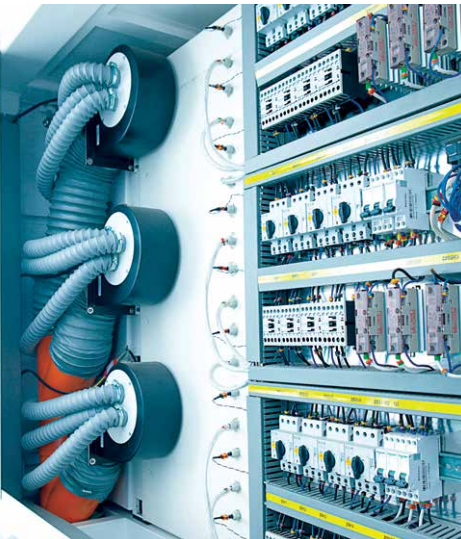
\* This is dependent on the plate gauge. \*\* Images are for illustrative purposes only.

The user-friendly design of the Flex-Line provides easy access and maintenance. Light finisher modules slide out for easy lamp replacement within minutes! Optional second light finisher shown.



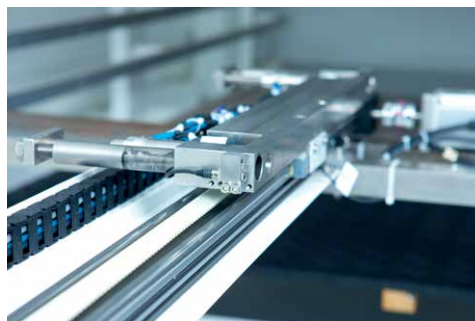
Each dryer slot is equipped with advanced air flow management and individual temperature control for fast and accurate drying.

Industrial control components are located nearby each section for easy access and efficient technical maintenance.



The high speed Flex-Pro 520XP washout processor uses the trusted heavy duty XP processor with 23 brushes and a separate 2-brush washout section to remove the black mask. Reliable mechanics and precise process controls provide excellent and consistent results.

After washout, each plate is transported through all remaining processes by a special tray. No mechanical stress is applied to the processed plate at any time.



Advanced mechanics supported by servo controls provide accurate and reliable transport of the flexo plate through all processing steps.



	Flex-Line			
MODEL	520 Compact	520 Standard	520XP Standard	520XP Max
<b>PERFORMANCE</b>				
Plate size (max) WxL	1320 x 2032 mm (52 x 80")	1320 x 2032 mm (52 x 80")	1320 x 2032 mm (52 x 80")	1320 x 2032 mm (52 x 80")
Plate size (min) WxL	210 x 297mm (8.2 x 11.7")	210 x 297mm (8.2 x 11.7")	210 x 297mm (8.2 x 11.7")	210 x 297mm (8.2 x 11.7")
Plate thickness (max)	0.7 - 7.0 mm (0.0275 - 0.275")	0.7 - 7.0 mm (0.0275 - 0.275")	0.7 - 7.0 mm (0.0275 - 0.275")	0.7 - 7.0 mm (0.0275 - 0.275")
<b>CONFIGURATION</b>				
LAMS + wash-out brushes	2 + 8	2 + 8	2 + 18	2 + 18
Finishing brushes	Top - 4, Back - 1	Top - 4, Back - 1	Top - 4, Back - 1	Top - 4, Back - 1
Digital section tank capacity	78 L (20.6 US gal)	78 L (20.6 US gal)	78 L (20.6 US gal)	78 L (20.6 US gal)
Main solvent tank capacity	313 L (82.6 US gal)	313 L (82.6 US gal)	313 L (82.6 US gal)	313 L (82.6 US gal)
UVA/UVC Tubes	27 x TL80 10R / 26 x TUV60-95W	27 x TL80 10R / 26 x TUV60-95W	27 x TL80 10R / 26 x TUV60-95W	54 x TL80 10R / 52 x TUV60-95W
<b>CONSUMPTION</b>				
Power supply	3W+N+PE 400 V 26A 50/60 Hz	3W+N+PE 400 V 32A 50/60 Hz	3W+N+PE 400 V 32A 50/60 Hz	3W+N+PE 400 V 37A 50/60 Hz
Air extraction volume (approx.)	1800 m <sup>3</sup> /hr	1800 m <sup>3</sup> /hr	1800 m <sup>3</sup> /hr	1800 m <sup>3</sup> /hr
Compressed air supply	6 bar (87 psi)	6 bar (87 psi)	6 bar (87 psi)	6 bar (87 psi)
<b>GENERAL</b>				
Dimensions (WxLxH)	2240 x 7450 mm (88.2 x 293.3")	2240 x 9770 mm (88.2 x 384.7")	2240 x 11265 mm (88.2 x 443.5")	2240 x 11265 mm (88.2 x 443.5")
Weight	5600 kg (12,350 lbs)	6969 kg (15,350 lbs)	7560 kg (16,670 lbs)	8160 kg (17,990 lbs)
Approvals	Complies with CE standards and RoHs directive.			

Note: Specifications are subject to changes without prior notice.

Local access to qualified service and spare parts worldwide



### Unique exceptional service for customers worldwide

In both a technical and operational capacity, Glunz & Jensen delivers exceptional customer care through the industry's strongest global after sales service. We cover any kind of prepress and finishing equipment within flexo and offset – including non-Glunz & Jensen products.

- **Equipment Installation** – Start off on the right foot with a professional installation.
- **Emergency Support (on site or remote)** – Minimize your down time.
- **All Inclusive Agreement** – Get professional service and all the necessary spare parts at a fixed price.
- **Preventive Maintenance Agreement** – Outsource the maintenance of your prepress equipment to a professional team.

