

# Instruction



## Preventive Maintenance Kit Minor Plate Processors

**IMPORTANT!**

Please keep this instruction with other machine documentation as future reference when ordering spareparts. The spareparts concerning this kit are as listed in "KIT CONTENTS".

**Part No 10062428 B**

**09-05-2014**

## Introduction

This instruction is valid for **Kit nos 10062452** and **10062538** (Cannot be ordered separately).

### Products covered

The above mentioned preventive maintenance kits are for the following processors:

<b>Plate Processors 85</b>	93865, 93869, 94199, 94201, 94354, 94366, 94389, 10067919, 10066500
<b>Plate Processors 125</b>	93866, 93870, 94200, 94208, 94355, 94367, 94390, 10067920, 10066501
<b>Plate Processors 150</b>	93867, 94209, 94352, 94356, 94368, 94391, 10069750, 10067921, 10066502
<b>Plate Processors 165</b>	93868, 94210, 94353, 94357, 94369, 94392, 10067922, 10066503



Verify that the serial number specified on the processor name plate located on the rear end of the tank on the left side is listed above.

### Kit contents

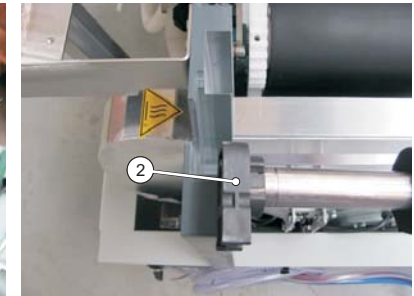
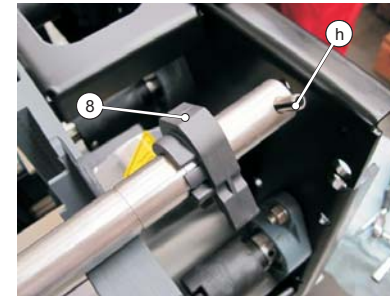
Check contents of the kit and make sure that all parts are present and in good condition.

The kit consists of:

Item	Number	Specification	Quantity	
			10062455	10062539
1	10037393	BEARING, TURCITE "A" D20.15/D25	14	14
2	10037392	BEARING, TURCITE	12	12
3	10041447	BEARING, TURCITE	4	4
4	10041446	BEARING, TURCITE	-	2
5	10041445	BEARING, TURCITE	-	3
6	10041444	BEARING, TURCITE	3	-
7	10041443	BEARING, TURCITE	2	-
8	10046059	BEARING D54	2	2
9	25387	GREASE, TUBE, PG 75, 20 ML	1	1
10	21110489	O-RING 87X3 VITON	1	1
11	10062428	INSTRUCTION (THIS DOCUMENT)	1	1

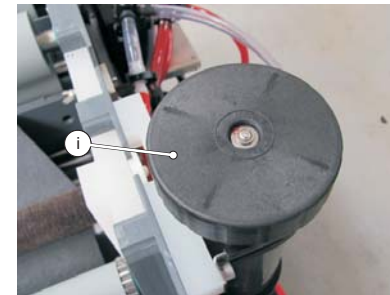
### Final drive bar

- Remove the pins (h) from the final drive bar in order to replace the bearings (8).
- Replace all bearings (2) on bottom rollers.



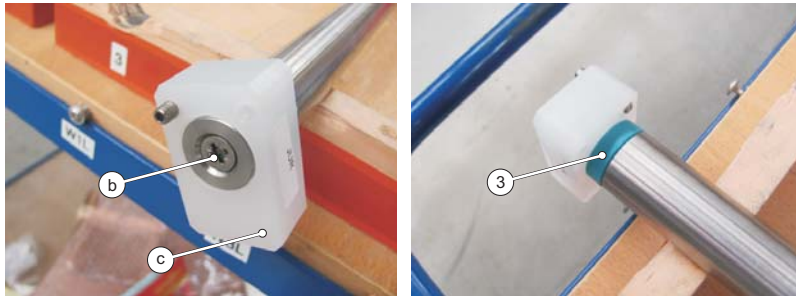
### Housing filter

- Dismount the filter lid (i).
- Replace the o-ring (10). Grease the o-ring with a thin layer of the PG 75 grease before mounting.



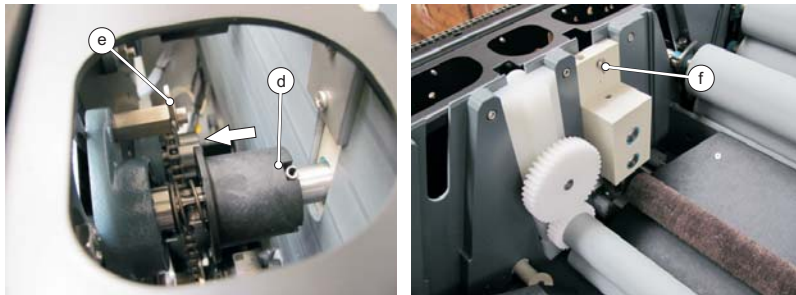
- Remount all rollers, brushes, brackets and the top covers.

- Dismount the screw (b) to remove the support block (c) from the lay-on roller.
- Replace the bearings (3).
- Mount back the support block on the roller.

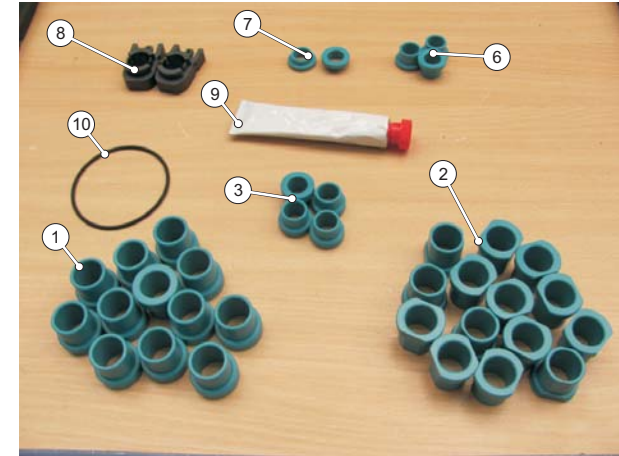
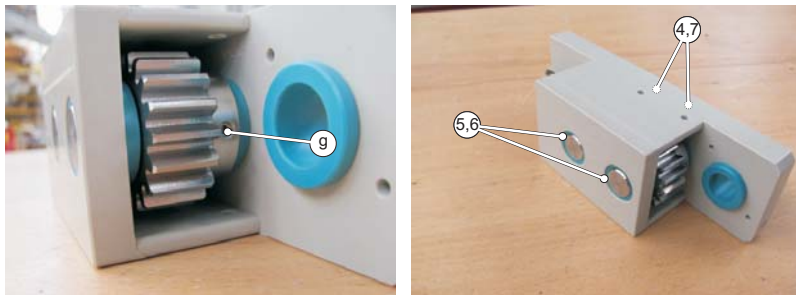


## Brush gearbox

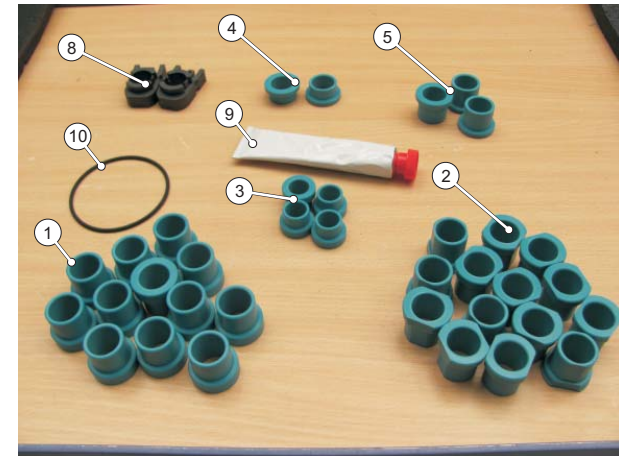
- Pull clutch (d) to clutch bearing and secure it with clutch lock (e).
- Dismount the brush gearbox by loosening the nut (f).



- Dismount the set screws (g) and remove the gearbox shafts with the gears.
- Replace the bearings (4,5,6,7).
- Remount the shafts agears, secure the gears with set-screws. Remount the gearbox onto the tank



10062455



10062539

## Estimated time



Estimated time for the installation of the kit is 30 minutes.

## Maintenance intervals

**i** Carry out this maintenance procedure either after below specified processing hours, or after specified years after installation of the processor, whatever comes first.

Processing hours	or	Years after installation	Maintenance	Kit no	
				85	125/150/165
2000	or	1	MINOR	10062455	10062539
4000	or	2	MEDIUM	10062456	10062540
6000	or	3	MINOR	10062455	10062539
8000	or	4	MAJOR	10062537	10062541

## Before Installation

Read this instruction sheet carefully and ensure it is fully understood before commencing the installation procedure. Seek clarification of anything that is not clear.

**h** The exchange procedure must only be carried out by a well qualified service technician who is familiar with the equipment.

**i** Installation of this kit is required as a part of Preventive Maintenance Kit Medium and/or Preventive Maintenance Kit Major.

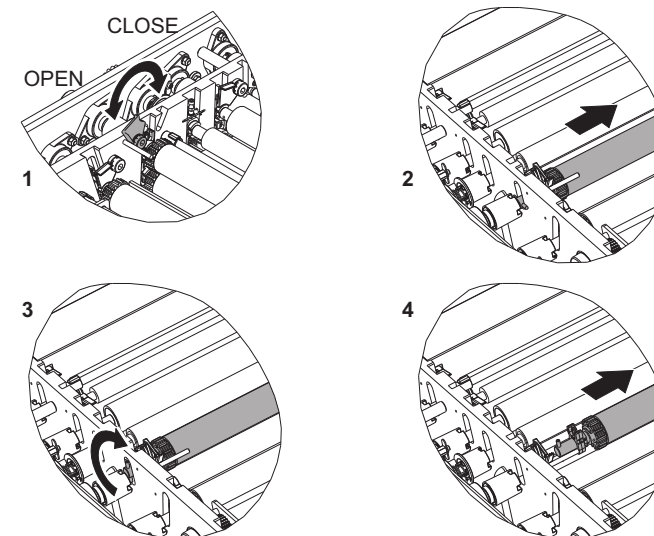
## Safety

**!** Before any work is carried out, ensure that the processor is switched off, and disconnected from the electricity supply. It is recommended that the mains supply be locked off using a padlock or similar, and then a check made to ensure that the processor will not run.

## Procedure

### Roller bearings

- Dismount the top covers, empty the tank into waste containers, remove all rollers, brushes and brackets so there is easy access to all gears, remove the fenders.
- When removing rollers from the clutch bearings as shown below.



- Remove the pins (a) from the upper rollers in order to replace the bearings (1).
- Replace all bearings (2) on bottom rollers.

