

Instruction



Preventive Maintenance Kit Major Cleaning Unit

IMPORTANT!

Please keep this instruction with other machine documentation as future reference when ordering spareparts. The spareparts concerning this kit are as listed in "KIT CONTENTS".

Part No 10062433 E

29-04-2014

Introduction

This instruction is valid for **Kit no 10062448** (Cannot be ordered separately).

Products covered

The above mentioned preventive maintenance kit is for the following processors:

Cleaning unit 85 serial nos 10063100, 95455, 94400, 94115, 93292, 92700, 10064250, 10067350.

Cleaning unit 120 serial nos 10062969, 95459, 94401, 93372, 92699, 10065195.



Verify that the serial number specified on the processor name plate located on the rear end of the tank on the left side is listed above.

Kit contents

Check contents of the kit and make sure that all parts are present and in good condition.

The kit consists of:

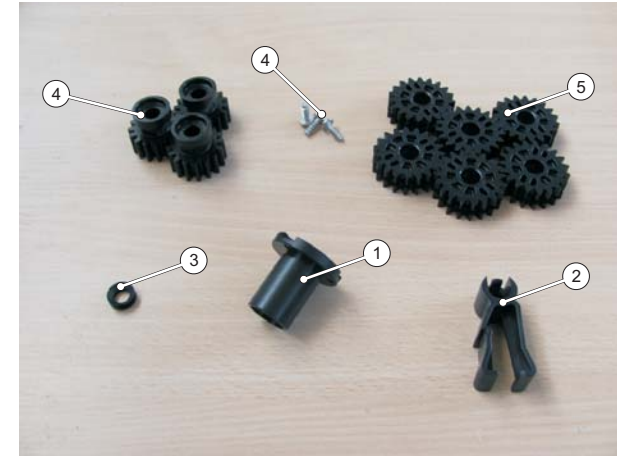
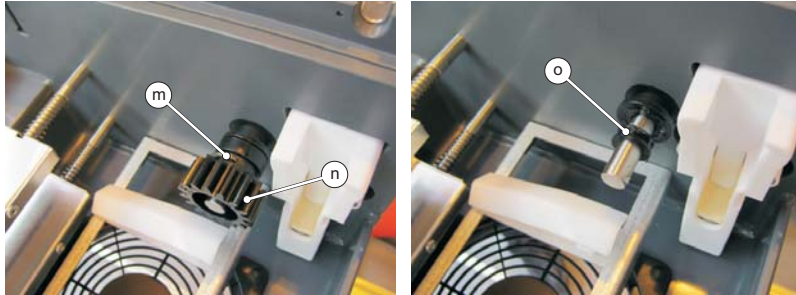
Item	Part No	Specification	Quantity
1	10006893	BEARING, DRIVE, BRUSH	1
2	43600	BEARING, ROLLER, SNAP, BLACK	1
3	6520	GROMMET, V-SEAL	1
4	73240	GEAR, Z16, M2	3
5	73262	GEAR, Z19, M2, D12	6
6	10062433	INSTRUCTION (THIS DOCUMENT)	1

Estimated time



Estimated time for the installaton of the kit is 180 minutes.

- Replace the gear and re-use the clip.



Maintenance intervals

- i** Carry out this maintenance procedure either after below specified processing hours, or after specified years after installation of the processor, whatever comes first.

Processing hours	or	Years after installation	Maintenance	Kit no
500	or	1	MINOR	10062449
1000	or	2	MEDIUM	10062450
1500	or	3	MINOR	10062449
2000	or	4	MAJOR	10062451

Before Installation

Read this instruction sheet carefully and ensure it is fully understood before commencing the installation procedure. Seek clarification of anything that is not clear.

- H** The exchange procedure must only be carried out by a well qualified service technician who is familiar with the equipment.
- i** Install the Preventive Maintenance Kit Minor and Medium together with this kit.

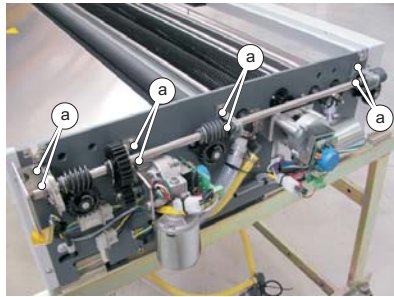
Safety

- ⚠** Before any work is carried out, ensure that the processor is switched off, and disconnected from the electricity supply. It is recommended that the mains supply be locked off using a padlock or similar, and then a check made to ensure that the processor will not run.

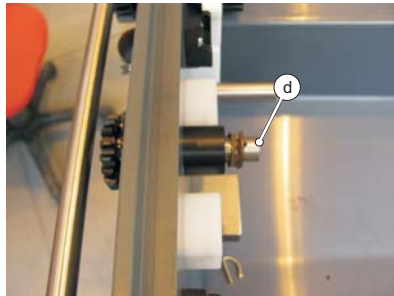
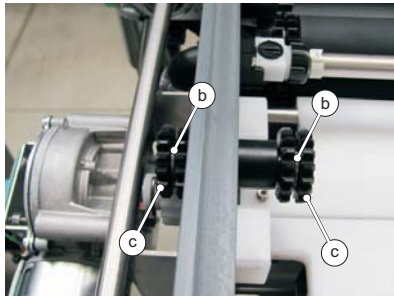
Procedure

Brush drive bearing

- Take off the top covers, empty the tank into waste containers, remove all rollers, brushes and brackets so there is easy access to all gears, remove the fenders.
- Dismount the drive shaft from the tank by unscrewing the screws (a).

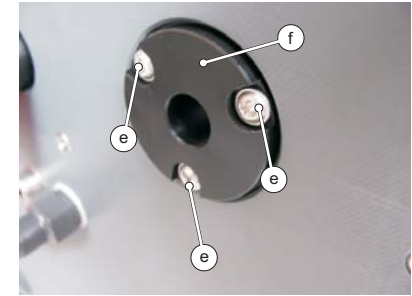


- Take off the r-clips (b) to remove the gears (c) and the shaft (d).



- Dismount the three screws (e) and replace the the bearing (f). Remember to use the new screws (6) from the kit when mounting the bearing.

- i** After mounting the bearing control that the shaft can run free in the bearing. In case that the shaft goes tight turn each screw 1/4 turn backwards.



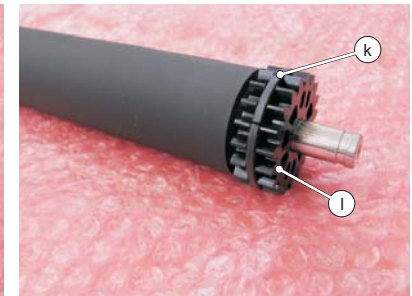
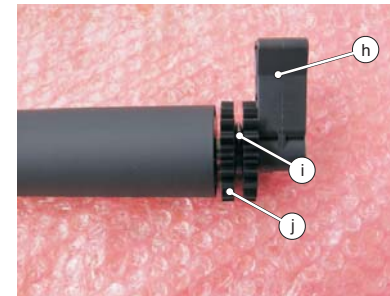
Roller bearings

- Compress the bearing (g) to release the roller and remove the the bearing.
- Replace the bearing once the exchange of the gears is completed.



Gears

- Remove the bearing (h) from the upper rollers.
- Take off the clip (i) and remove the gear (j). Replace the gear.
- Remove gear guide plates (k) from the lower rollers.
- Replace the gear (l).



- Remove the clip (m) and take off the gear (n).
- Replace the v-seal (o).