

Instruction



Preventive Maintenance Kit Medium Plate Processors Thermal

IMPORTANT!

Please keep this instruction with other machine documentation as future reference when ordering spareparts. The spareparts concerning this kit are as listed in "KIT CONTENTS".

Part No 10066159 B

30-04-2014

Introduction

This instruction is valid for **Kit nos 10066114 and 10066124** (Cannot be ordered separately).

Products covered

Plate Processors 85 Thermal serial nos 90117, 90119, 90123, 90137, 90139, 90145, 90147, 91204, 91469, 91471, 91476, 91584, 91610, 91714, 91716, 92073, 92078, 92079, 92530, 92531, 92538, 92539, 92557, 93109, 93382, 94100, 94150.

Plate Processors 135 Thermal serial nos 90013, 90014, 90018, 90120, 90138, 90143, 90148, 91160, 91205, 91612, 91708, 91715, 91717, 91719, 91720, 92529, 92532, 92558, 92560, 92671, 93110, 93381, 93383, 93654, 94101, 94151.



Verify that the serial number specified on the processor name plate located on the rear end of the tank on the left side is listed above.

Kit contents

Check contents of the kit and make sure that all parts are present and in good condition.

The kit consists of:

Item	Number	Specification	Quantity	
			10066140	10066144
1	10052578	GEAR, Z16, M3, RIGHT	6	6
2	10052561	GEAR, Z16, M3, LEFT	2	2
3	43236	WORM, GEAR, Z3, M3, LEFT	1	1
4	43235	WORM, GEAR, Z3, M3, RIGHT	5	5
5	53323	GEAR, Z17, M2	2	2
6	10014027	GEAR, Z31, M2	3	3
7	10014228	GEAR, Z23, M2	5	5
8	35482	O-RING, D68x2.0, NBR	6	6
9	42223	BEARING, SHAFT, DRIVE	6	6
10	35483	V-RING, VA20, NBR	6	6

Item	Number	Specification	Quantity	
			10066140	10066144
11	22887	BEARING, SHAFT, LEAD-IN	12	12
12	10003917	VALVE, POPPET, ASSEMBLY, PUMP	2	2
13	10060921	WET END SET, MD20	1	1
14	35386	O-RING D16.3X2.4 FPM, GREEN	1	1
15	35385	O-RING D19.3X2.4, FPM, GREEN	1	1
16	10066159	INSTRUCTION (THIS DOCUMENT)	1	1

Estimated time



Estimated time for the installation of the kit is 120 minutes.

Maintenance intervals



Carry out this maintenance procedure either after below specified processing hours, or after specified years after installation of the processor, whatever comes first.

Processing hours	or	Years after installation	Maintenance	Kit no	
				85	135
1500	or	1	MINOR	10066145	10066141
3000	or	2	MEDIUM	10066144	10066140
4500	or	3	MINOR	10066145	10066141
6000	or	4	MAJOR	10066120	10066112
7500	or	5	MINOR	10066145	10066141
9000	or	6	MEDIUM	10066144	10066140
10500	or	7	MINOR	10066145	10066141
12000	or	8	MAJOR	10066120	10066112

Before installation

Read this instruction sheet carefully and ensure it is fully understood before commencing the installation procedure. Seek clarification of anything that is not clear.



The exchange procedure must only be carried out by a well qualified service technician who is familiar with the equipment.

i Install the Preventive Maintenance Kit Minor together with this kit.

i Installation of this kit is required as a part of Preventive Maintenance Kit Major.

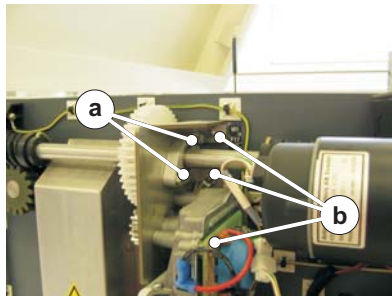
Safety

! Before any work is carried out, ensure that the processor is switched off, and disconnected from the electricity supply. It is recommended that the mains supply be locked off using a padlock or similar, and then a check made to ensure that the processor will not run.

Procedure

Preparing the processor

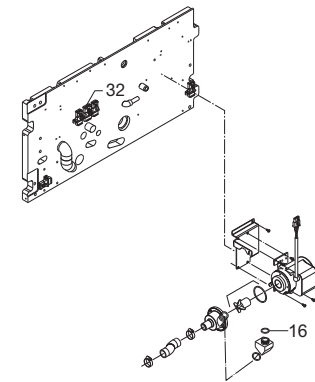
- Open the top covers, empty the tank into waste containers, remove all rollers, brushes and brackets so there is easy access to all gears, remove the fenders.
- Disconnect the cable from the drive motor.
- Dismount the screws from house bearing (a).
- Dismount the screws (b) that hold drive motor bracket to the tank.
- Take off the drive motor.



Developer circulation pump

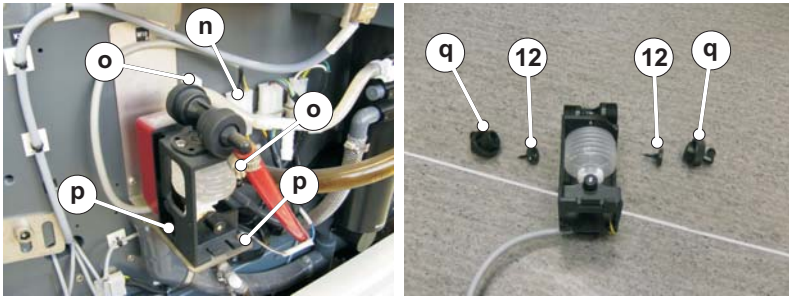
i Some models only!

- Replace the o-ring (16) in the fitting on the developer circulation pump as shown opposite. Wet end set
- See the separate instruction for installation of the Wet end set.
- Install the Wet end set on the developer circulation pump.



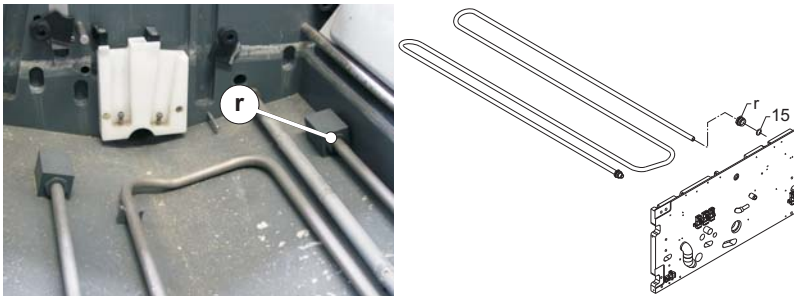
Replenish pump

- Disconnect the cable from the connector (n).
- Loosen the clamps (o) to remove the hoses.
- Dismount the screws (p) to remove pump from the bracket.
- Dismount the elbow fittings (q) from the pump.
- Replace the poppet valves (12) inside the pump head.
- Remount the elbow fittings, remount the pump onto the bracket and reconnect the hoses and cable. Reuse and tighten the clamps.

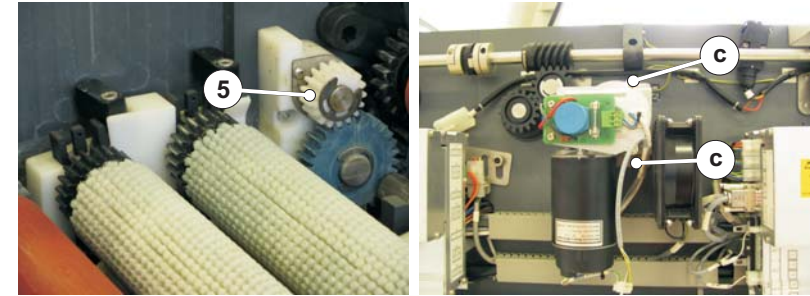


Cooling pipe

- Loosen the nut (r).
- Replace the o-ring (15).

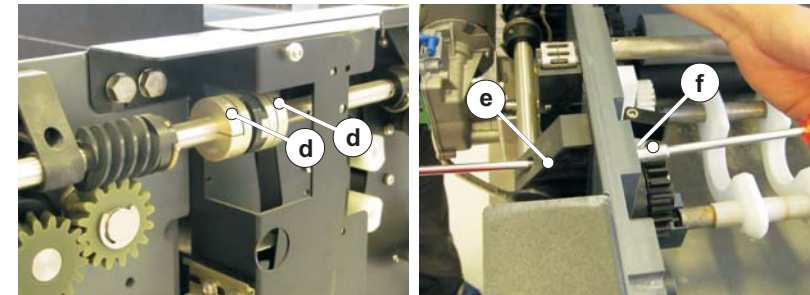


- Disconnect the brush motors cables.
- Take off the circlip, gear (5) to be replaced, seal and v-ring from the brush bearings inside the tank. For procedure refer to the Minor Preventive Maintenance Kit instruction.
- Dismount the two screws (c) from all brush motors and remove them.

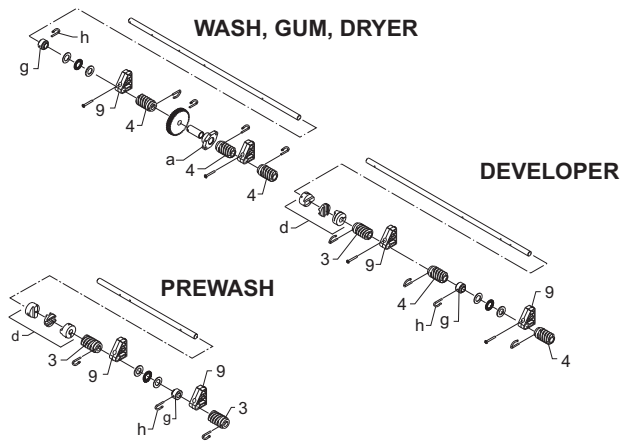


Drive shaft

- Disconnect the drive shaft ground cable.
- Loosen the two screws (d) on the couplings that connect the 4 parts of the main shaft.
- Dismount the screws (e) and nuts (f) that hold the drive shaft bearings to the tank as shown.
- Remove the complete drive shaft.



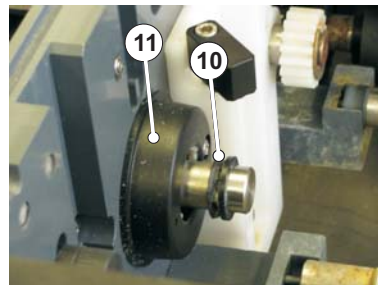
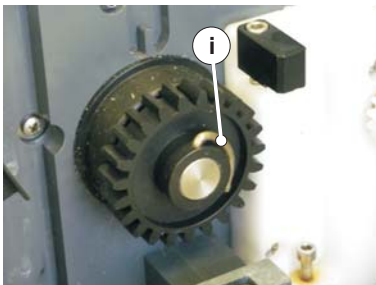
- Dismount r-clips (h) from the axial bearings (g) and from all worm gears.
- Replace all drive shaft bearings (9) and all worm gears (3, 4).



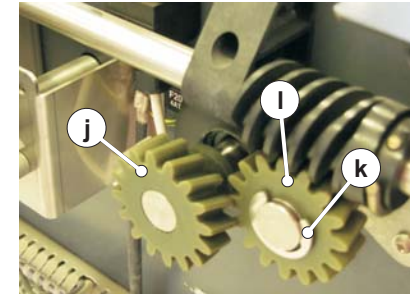
- i** If the Preventive Maintenance Kit Major is to be installed as well, refer to the relevant instruction for replacement of the axial bearing and drive shaft bearing.

Drive gears

- Take off the r-clips (i) from the gears inside the tank, pull out the lead-in shaft.
- Dismount the old gear from the lead-in shaft and mount the new gear (j) identical as the old one.
- Dismount the old bearings (11) and replace them with the new.
- Replace the o-ring placed inside the bearing on the inner side of the tank.
- Remount the bearings, insert the lead-in shaft. Replace the v-ring (10).
- Repeat the procedures on all bearings.



- Take off the circlip (k) from the intermediate gear.
- Replace the old gear (l) with the identical new one.



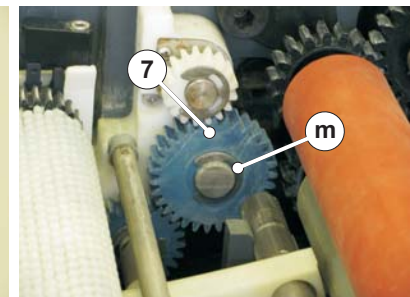
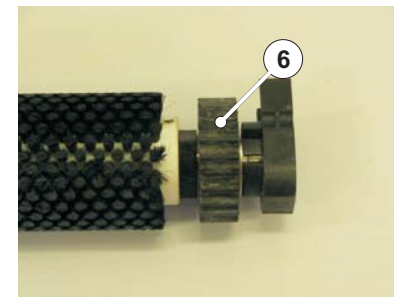
- Place back all rollers, brushes. For reference see the label underneath the top cover.

- i** If the Preventive Maintenance Kit Major is to be installed as well, refer to the relevant instruction for replacement of the drive motor and brush motors.

- Remount the drive shaft onto the tank.
- Remount the drive motor.
- Remount the brush motors.

Brush gears

- Remove the bearing and replace the gear (6) on developer brushes and wash brushes (7).
- Take off the circlip (m) and replace the gear (7).



- Place back all rollers, brushes. For reference see the label underneath the top cover.